



Application Note AN-M-016

# 定水中的乙酸 - 由于将 IC 与 MS 器合,提高了敏度

Increased sensitivity thanks to coupling IC with a MS detector

,/ , (DBP) : (HAAs)  
HAA / , EPA , HAA («HAA5») 60 g/L (EPA 816-F-09-004): (0 mg/L) (20 g/ L), (70 g/L),

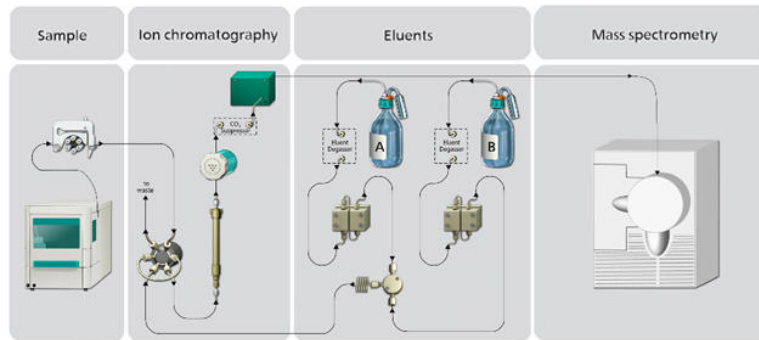
EPA 557 (IC-MS) HAA,LOD 0.02–0.11 g/L,,HAA MS, MCL

: (MCAA) (MBAA) (BCAA) (BDCAA) (DBAA) (DCAA)

) (TBAA) (CDBAA) (TCAA)

IC , (MS)(Waters SQ 2)(1) Metrosep A Supp 5 -  
 250/2.0 Metrosep A Supp 10 2 mm , MS ( ),

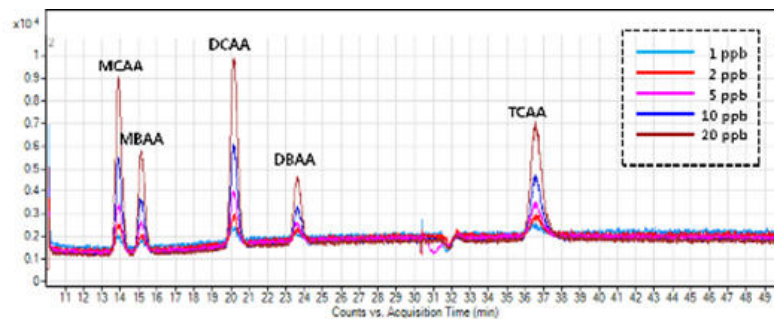
Empower™. Empower Metrohm Driver 2.1™ ,



**Figure 1.** MS HAA

HAA 40 2 EPA 816-F-09-004 HAA , «HAA5» 74-  
 124% EPA 557 MCAA MBAA EPA ( 0.2 0.064

g/L), MS , EPA 557 , HAA(DCAATCAAMCAAMBAC  
 DBAA)(EPA 816-F-09-004) 60 g/L LOD (1),, IC-MS



**Figure 2.** 25 µg/L HAA 100 µL HAA

1 (LOD)

	(/)
MCAA	0.045
	0.045
DCAA	0.45
	0.60
DBAA	0.15
	1.5
BDCAA	1.5
CDBAA	1.5
	1.5

„ MS „

Internal reference: AW IC FR6-0120-062019

## CONTACT

117702  
100085

marketing@metrohm.com.c  
n



940 Professional IC Vario ONE/ChS/PP/HPG  
940 Professional IC Vario ONE/ChS/PP/HPG IC ,,  
942 Extension Modul

:  
- ”



Metrosep A Supp 5 - 250/2.0  
, Metrosep A Supp 5 - 250/2.0 ,Metrosep A Supp 5 -  
250/2.0  
, IC-MS



889 IC Sample Center – cool  
889 IC Sample Center – cool 889 IC Sample  
Center ,,



MSM A  
,MSMIC



KF Coulometer Titrimo



MagIC Net 4.0 Professional1

Professional IC Compact IC , Autosampler800

Dosino771 Compact Interface ,

;

MagIC Net Professional FDA 21 CFR 11 GLP

MagIC Net 16 :

1

U