



Metrohm Combustion IC Manual - Quartz

2.930.9030

The Metrohm Combustion IC Manual - Quartz package enables the analysis of halogens and sulfur in flammable samples of all types using inline combustion digestion (pyrohydrolysis) with subsequent ion chromatography determination (Combustion IC). It comprises all required components, such as the Combustion Oven (TEI) from Trace Elemental Instruments (2.0136.0600), the quartz combustion tube (6.07311.100), the 920 Absorber Module, the 930 Compact IC Flex Oven/SeS/PP/Deg, and the MagIC Net software. If necessary, the Metrohm Combustion IC package can be supplemented with one of the following Autosamplers: Solid Autosampler CIC (TEI), Liquid Autosampler CIC (TEI) or GLS Sampler CIC (TEI).

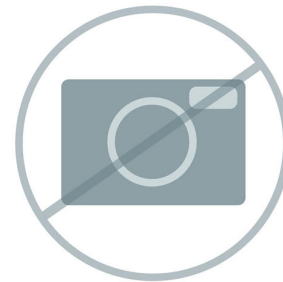
Below, the accessories are grouped into Scope of delivery and Optional accessories.

Please keep this printout at hand for ordering replacement material.

These lists may be subject to change.

Scope of delivery 2.930.9030

Qt.	Order no.	Description
-----	-----------	-------------



2 PCS

1.800.0040

800 Dosino (cable length 0.65 m)

Drive with write/read hardware for intelligent dosing units. With permanently attached cable (length 0.65 m).



1 PCS

1.850.9010

IC Conductivity Detector

Compact and intelligent high performance conductivity detector for intelligent IC instruments. Outstanding temperature stability, the complete signal processing within the protected detector block and the latest generation of DSP – Digital Signal Processing – guarantee the highest precision of the measurement. No change of measuring ranges (not even automatic ones) is required, due to the dynamic working range.



1 PCS

1.920.0010

920 Absorber Module

The 920 Absorber Module combines the Combustion Module with the ion chromatograph. The 920 Absorber Module ensures that the gaseous compounds of the analytes are dissolved and channeled to the IC. It is responsible for the entire Liquid Handling. In addition to Combustion IC, it can also be used for gas analysis.



The 930 Compact IC Flex Oven/SeS/PP/Deg is the intelligent Compact IC instrument with column oven, sequential suppression, peristaltic pump for suppressor regeneration and built-in degasser. The instrument can be used with any separation and detection methods.



Typical areas of application:

- Anion or cation determinations with sequential suppression and conductivity detection

Boat Introduction Module for the Combustion IC for use with the quartz combustion tube. This module uses a sample boat to transfer samples into the oven for combustion. It also includes a pair of tweezers and a petri dish for handling the sample boat.



Quartz combustion tube for the Combustion Oven (TEI).



For anion preconcentration and matrix elimination. The enlargement of the packing bed increases the capacity of the two preconcentration columns completely made of PEEK. The high capacity is required primarily when matrix effects might cause an overloading of the preconcentration column or when samples with high ionic strength are to be analyzed.



1 PCS

6.1014.000

Metrosep A Trap 1 - 100/4.0

High-capacity anion column, which is used to purify the eluent flow. Even chemicals of the highest quality level, e.g. "Ultrapur" or "puriss", can still contain minimal anion contaminations. These are reliably held back by the Metrosep A Trap 1 - 100/4.0.

This column is primarily used with gradient applications.



1 PCS

6.1014.200

Metrosep I Trap 1 - 100/4.0

The Metrosep I Trap 1 - 100/4.0 column is used to eliminate ionic, i.e. cationic and anionic, contaminants from aqueous solutions. Its use is especially recommended for the purification of the transfer water in combination with "MISP" or "Metrohm Inline Sample Preparation". Using the Metrosep I Trap 1 - 100/4.0 column can significantly reduce the influence of the transfer water on the system blank.



2 PCS

6.1546.030

Piston tongs

For pistons for 807 Dosing Units or cylinder units OMNIS.



1 PCS

6.1602.150

Bottle attachment / GL 45 - 3 x UNF 10/32

For the connection of 1/16 in. capillaries. Used in conjunction with MSM auxiliary solutions and in Metrohm Inline Sample Preparation.



2 PCS

6.1602.160

Bottle attachment GL 45 for eluents and reagents

For eluent, reagent, and rinsing bottles, with connectors for the adsorber tube and the aspiration tubing.



1 PCS

6.1608.050

Drying bottle / 100 mL / GL 45



2 PCS

6.1608.070

Eluent bottle / 2 L / GL 45



2 PCS

6.1609.000

Adsorbing tube, large and bent

For filling with adsorber material.

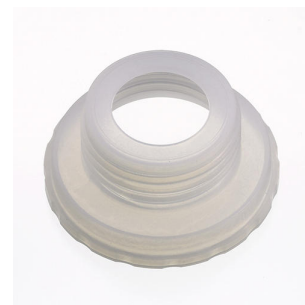


2 PCS

6.1618.020

Thread adapter S 40 to GL 45

Adapter for bottles with S40 thread (Merck...) to GL45.



3 PCS

6.1803.030

PTFE capillary 0.5 mm i.d. / 3 m

Capillary for inline dialysis, for Dialysis Unit, IC Dialysis Sample Processor, IC Liquid Handling Dialysis Unit



4 PCS

6.1803.160

PTFE capillary, 0.75 mm ID / 3 m

PTFE capillary for use with the 920 Absorber Module.



2 PCS

6.1805.010

FEP tubing / M6 / 13 cm

With light and kink protection.



2 PCS 6.1805.030 FEP tubing / M6 / 150 cm
With light and kink protection



1 PCS 6.1808.060 T connector / M6 inner

3 M6 inner threads.



1 PCS 6.1808.280 Adapter 807 Dosing Unit Port 4, M6 inner

Adapter for using Port 4 of the 807 dosing Unit for connection with an FEP tubing / M6.



2 PCS 6.1816.080 Silicone tubing 6 mm i.d. / 2 m

Drainage tubing to the "Waste Collector".



2 PCS

6.1819.100

FEP aspiration tubing to 2 L bottle

Aspiration tubing to bottle attachment with M6 connector. For the production of eluents.



1 PCS

6.1825.290

PEEK sample loop 250 µL

Sample loop for «Metrohm intelligent Partial loop Technique» (MiPT) and for PILS (particle into liquid sampler). With 2 Peek pressure screws.

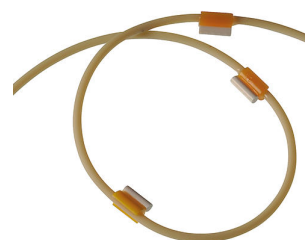


1 PCS

6.1826.420

PharMed® pump tubing (orange/yellow), 3-stopper

For MSM regeneration with peristaltic pump.



1 PCS

6.1831.040

PEEK capillary 0.5 mm i.d., 15 cm

For inline dialysis. For IC Dialysis Unit, IC Dialysis Sample Processor, IC Liquid Handling Dialysis Unit



2 PCS

6.2023.020

Clip for SGJ 14/15

Clip for SGJ 14/16



2 PCS

6.2057.230

Dosino holder for the Absorber Module

Holder for fastening Dosinos to the Absorber Module.



1 PCS

6.2151.020

Cable USB A - USB B 1.8 m

USB connecting cable



1 PCS

6.2251.000

Colored sleeves for capillaries

Colored pieces of heat shrink tubing for capillary coding. Three pieces each of five different colors.



1 PCS

6.2421.000

Absorber tube to the Absorber Module

Absorber tube for the absorption of the combustion gases from the Combustion Module.



1 PCS

6.2621.080

Capillary cutter

Cutting tool for simple cutting of plastic capillaries, 1/16" and 1/8", including 5 replacement blades.



3 PCS

6.2744.010

Pressure screw 5x

With UNF 10/32 connection. For the connection of PEEK capillaries



1 PCS

6.2744.014

Pressure screw 2x

With UNF 10/32 connection. For the connection of PEEK capillaries



1 PCS

6.2744.034

Coupling olive/UNF 10/32, 2x

Connection between pressure screw and pump tubing. 2 pieces. For IC instruments with peristaltic pump.



3 PCS

6.2744.080

M6 thread / UNF 10/32 adapter

With M6 outer thread. For IC instruments.



4 PCS

6.2744.090

Pressure screw long

Long version. With UNF 10/32 connection. 2 pieces. For the connection of PEEK capillaries (MCS and Sample degasser)



1 PCS

6.2744.170

Pressure screw PEEK UNF 1/4-28, 3 pieces

Fixing connecting capillaries of the eluent components at the Eluent Synthesizer



1 PCS

6.2744.180

Pump tubing connector with security lock and filter

For the connection of a pump tubing and a capillary with built-in filter



1 PCS

6.2744.200

Adapter UNF 10/32 outer / M6 inner

Connecting 1/16 in. PEEK capillaries and transfer tubing (M6)



8 PCS

6.2744.220

Screw stopper 10/32 long

For Professional IC Instruments. For sealing unused ports of degassers and MCS.

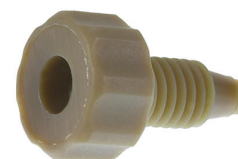


2 PCS

6.2744.350

PEEK pressure screw 14 mm, 3 pcs.

With UNF 10/32 connector. For the connection of PEEK capillaries in the Absorber Module.



1 PCS

6.2766.000

Holder for absorber tubing

Holder for fastening the absorber tubing in the Absorber Module.

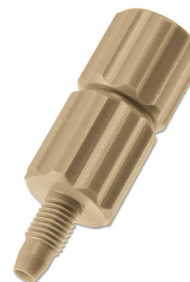


1 PCS

6.2766.010

Holder for inlet valve

Holder for inlet valve to the Absorber Module.



1 PCS

6.2824.170

Inlet valve PEEK

Metal-free check valve for the inlet side of the IC pump heads of the devices 940, 930, 925, 883, 882, 881, and 850.



1 PCS

6.2832.000

MSM Rotor A

Suppressor rotor for all IC instruments with MSM (Metrohm Suppressor Module)



1 PCS

6.2842.020

Adapter sleeve, MSM

Not only the MSM Rotor A but also the MSM-LC Rotor A can be installed in the rotor housing with the aid of the adapter sleeve.



1 PCS

6.3032.150

807 Dosing Unit 5 mL

807 Dosing Unit with integrated data chip with 5 mL glass cylinder and light protection, mountable to a reagent bottle with ISO/DIN GL 45 glass thread. FEP tubing connection, antidiffusion tip.



1 PCS

6.3032.210

807 Dosing Unit 10 mL

807 Dosing Unit with integrated data chip with 10 mL glass cylinder and light protection, mountable to a reagent bottle with ISO/DIN GL 45 glass thread. FEP tubing connection, antidiffusion tip.



1 PCS

6.5000.000

Accessory kit: Vario/Flex Basic

Basic set of accessories for a Professional IC Vario or Compact IC Flex.



1 PCS

6.5000.010

Accessory kit: Vario/Flex ONE

Set of accessories for the ONE Module (IC pump with injector) for Professional IC Vario and Compact IC Flex instruments.



1 PCS

6.5000.020

Accessory kit: Vario/Flex SeS

Set of accessories for sequential suppression (SeS) for Professional IC Vario and Compact IC Flex instruments. Without Suppressor Rotor.



Optional accessories

Order no.	Description
2.948.0010	<p>948 Continuous IC Module, CEP</p> <p>Automated hydroxide eluent production takes place with the 948 Continuous IC Module. Isocratic eluents can be produced and gradients can be run.</p> <p>The 948 Continuous IC Module, CEP is comprised of the following parts:</p> <ul style="list-style-type: none">• 948 Continuous IC Module• Eluent Producer Cartridge (EPC, 6.02850.200)• Continuous anion trap (CT, 6.02850.100)• High-pressure degasser (H-DEG, 6.02850.000) <p>Example methods according to 948 Continuous IC Module manual.</p>
6.07311.020	<p>Boat Introduction Module, ceramic</p> <p>Boat Introduction Module for the Combustion IC for use with the ceramic combustion tube. This module uses a sample boat to transfer samples into the oven for combustion.</p> <p>It also includes a pair of tweezers and a petri dish for handling the sample boat.</p>
6.07311.040	<p>Liquid Introduction Module, automated (TEI)</p> <p>The Liquid Introduction Module enables the combustion of liquid samples by using the Liquid Autosampler CIC to inject the sample directly. The module can be used for samples with a boiling point < 420 ° C.</p> <p>This module can also guide gaseous or LPG samples from the GLS Sampler CIC into the oven.</p>



6.07311.210 Sample cup, quartz, pk=30

Quartz cup for sample injection in Metrohm Combustion IC (TEI), 30 pcs.



6.2842.100 MSM-HC Rotor A, Hydroxide

Suppressor rotor with high capacity for hydroxide eluents for all IC instruments with MSM-HC (Metrohm Suppressor Module with high capacity).



6.6059.406 MagIC Net 4.x Compact Upgrade to MagIC Net 4.x Professional: 1 license

Program upgrade from MagIC Net Compact to MagIC Net Professional



6.6059.407 MagIC Net 4.x Compact Upgrade to MagIC Net 4.x Multi: 3 licenses

Program upgrade from MagIC Net Compact to MagIC Net Multi



Professional chromatography software from Metrohm for controlling one intelligent Compact IC instrument, one detector and one Autosampler, or one 771 Compact Interface. The software permits checks, data acquisition, data evaluation and data monitoring as well as report generation of ion chromatographic analyses.



Graphical user interface for routine operations, extensive database programs, method development, configuration and manual control panel; very flexible user management, efficient database operations, extensive data export functions, individually configurable report generator, control and monitoring of all system components and the chromatography results.

MagIC Net Compact complies fully with FDA Regulation 21 CFR Part 11 as well as GLP.

MagIC Net is available in 15 dialog languages: German, English, Chinese, Traditional Chinese, French, Italian, Spanish, Portuguese, Bulgarian, Czech, Hungarian, Japanese, Korean, Russian, Slovakian

With this version, the graphic user interface has been modernized, which improves, among other things, the scaling and sharpness of the user interface on 4K monitors.

1 license.

The installation and documents are supplied on a USB flash drive.

Professional chromatography software from Metrohm for controlling all intelligent Professional IC systems, Compact IC systems and their peripherals, all detectors and the various Auto samplers, 800 Dosino, 771 Compact Interface, etc. The software permits checks, data acquisition, data evaluation and data monitoring as well as report generation of ion chromatographic analyses.



Graphical user interface for routine operations, extensive database programs, method development, configuration and manual control panel; very flexible user management, efficient database operations, extensive data export functions, individually configurable report generator, control and monitoring of all system components and the chromatography results.

MagIC Net Professional complies fully with FDA Regulation 21 CFR Part 11 as well as GLP.

MagIC Net is available in 15 dialog languages: German, English, Chinese, Traditional Chinese, French, Italian, Spanish, Portuguese, Bulgarian, Czech, Hungarian, Japanese, Korean, Russian, Slovakian

With this version, the graphic user interface has been modernized, which improves, among other things, the scaling and sharpness of the user interface on 4K monitors.

1 license

The installation and documents are supplied on a USB flash drive.

Client/server-compatible chromatography software from Metrohm for controlling all intelligent Professional IC systems, Compact IC systems and their peripherals, all detectors and the various Autosamplers, 800 Dosino, 771 Compact Interface, etc.

The software permits checks, data acquisition, data evaluation and data monitoring as well as report generation of ion chromatographic analyses. Data and method are centrally stored on a Server.



Graphical user interface for routine operations, extensive database programs, method development, configuration and manual control panel; very flexible user management, efficient database operations, extensive data export functions, individually configurable report generator, control and monitoring of all system components and the chromatography results.

MagIC Net Multi complies fully with FDA Regulation 21 CFR Part 11 as well as with GLP.

MagIC Net is available in 15 dialog languages: German, English, Chinese, Traditional Chinese, French, Italian, Spanish, Portuguese, Bulgarian, Czech, Hungarian, Japanese, Korean, Russian, Slovakian

With this version, the graphic user interface has been modernized, which improves, among other things, the scaling and sharpness of the user interface on 4K monitors.

Performance for client/server systems with servers outside the in-house company network has been improved.

Client/server version with 3 licenses
