



919 IC Autosampler plus

2.919.0020

The 919 IC Autosampler plus fulfills the requirements of laboratories with medium sample numbers. It enables automation of the full range of Metrohm IC instruments.

Below, the accessories are grouped into Scope of delivery and Optional accessories.

Please keep this printout at hand for ordering replacement material.

These lists may be subject to change.

Scope of delivery 2.919.0020

Qt.	Order no.	Description
1 PCS	1.919.0020	919 IC Autosampler plus

The 919 IC Autosampler plus fulfills the requirements of laboratories with medium sample numbers. It enables automation of the full range of Metrohm IC instruments.



1 PCS

6.1453.250

Sample beaker, plastic (PP), 250 mL, 1 piece

Sample beaker, plastic (polypropylene, PP), 250 mL, suitable for sample racks: 6.2041.310, 6.2041.400, 6.2041.430, 6.2041.510, 6.2041.820, 6.2068.020, and 6.2068.030, 1 piece



1 PCS

6.1803.030

PTFE capillary 0.5 mm i.d. / 3 m

Capillary for inline dialysis, for Dialysis Unit, IC Dialysis Sample Processor, IC Liquid Handling Dialysis Unit



1 PCS

6.1826.360

Pump tubing LFL (white/white), 3 stoppers

For Sample Processors



1 PCS

6.1831.050

PEEK capillary 0.5 mm i.d., 40 cm

For inline dialysis and for sample changers. For IC Dialysis Unit, IC Sample Processor, Compact IC Autosampler, IC Dialysis Sample Processor, IC Liquid Handling Dialysis Unit, Compact VA Autosampler



1 PCS

6.1831.060

PEEK capillary 0.5 mm i.d., 1 m

For inline dialysis and for Sample Changers. For IC Dialysis Unit, IC Sample Processor, Compact IC Autosampler, IC Filtration Sample Processor, IC Dialysis Sample Processor, IC Liquid Handling Dialysis Unit



1 PCS

6.2041.510

Sample rack, 56 x 11 mL and 1 x 250 mL (PVC)

Sample rack for 919 Autosampler plus, 858 Professional Sample Processor suitable for 56 sample vessels and 1 rinsing bottle. The following sample vessels and rinsing bottle can be used: 100 mL digestion tubes (CSB).

Plastic: Polyvinyl chloride (PVC)



1 PCS

6.2151.000

Cable USB A – mini-DIN 8-pin

Controller cable



1 PCS

6.2621.300

Tool set for Advanced IC Sample Processors

Tool set consisting of open-end wrenches and hexagon keys.



1 PCS

6.2739.000

Wrench

For tightening connectors



1 PCS

6.2743.057

Sample vessel 11 mL

200 pieces. For IC Sample Processors and VA Autosamplers.

The IC sample vessels are made of polypropylene (PP) plastic for health-care applications. Production and packaging both take place under sterile and clean room conditions (Clean Room Class 7, in accordance with DIN ISO 14644). This guarantees minimal degrees of contamination. The sample vessels are subjected to random checks for leachable anions and cations.



1 PCS

6.2743.077

Stopper with perforation

200 pieces. For IC Sample Processors



1 PCS

6.2744.014

Pressure screw 2x

With UNF 10/32 connection. For the connection of PEEK capillaries



1 PCS

6.2744.034

Coupling olive/UNF 10/32, 2x

Connection between pressure screw and pump tubing. 2 pieces. For IC instruments with peristaltic pump.



1 PCS

6.2744.070

Pressure screw short

Short version. With UNF 10/32 connection. 5 pieces. For the connection of PEEK capillaries

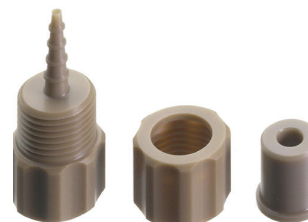


1 PCS

6.2744.160

Nozzle/UNF 10/32 coupling with security device

Security device for connecting pump tubing to a nozzle.



1 PCS

6.2833.030

Needle holder 1/8 in. for 863 Compact Autosampler

Needle holder 1/8 in. for 863 Compact Autosampler



1 PCS





6.2846.010

Sample needle made of zirconium oxide with PEEK tip

Sample needle for Sample Processors and Autosampler in ion chromatography. The PEEK tip guarantees secure piercing of the vial covering.



Optional accessories

Order no.	Description	
6.1826.310	<p>Pump tubing LFL (orange/green), 3-stopper</p> <p>Pump tubing for suppressor solutions and for acceptor solutions for inline dialysis and for inline ultrafiltration.</p>	
6.1826.320	<p>Pump tubing LFL (orange/yellow) , 3-stopper</p> <p>For suppressor solutions and for acceptor solutions for inline dialysis and for inline ultrafiltration.</p>	
6.1826.330	<p>Pump tubing LFL (orange/white), 3 stoppers</p> <p>For all IC instruments with peristaltic pump.</p>	
6.1826.340	<p>Pump tubing LFL (black/black), 3 stoppers</p> <p>For the sample solution in inline dialysis.</p>	

6.1826.380 Pump tubing LFL (gray/gray), 3 stoppers
For Inline Dilution



6.1826.390 Pump tubing LFL (yellow/yellow), 3 stoppers
For the sample solution in Inline Ultrafiltration.



6.1835.030 PEEK sample tube
For the Compact Autosampler.



6.1835.050 PEEK sample tube
For sample changers for transferring larger-sized sample volumes, e.g. for
brightener determination.



6.2148.010

Remote Box MSB

Additional remote interface for the connection of devices that can be controlled via remote lines. With permanently attached cable.



6.2629.000

Screw nut to needle holder IC

On Sample Processors



6.2743.040

Vial PP, 2.5 mL, 2000 pieces

2.5 mL. 2000 pieces. For IC Sample Processors.

The IC sample vessels are made of polypropylene (PP) plastic for health-care applications. Production and packaging both take place under sterile and clean-room conditions (Clean Room Class 7, in accordance with DIN ISO 14644). This guarantees minimal degrees of contamination. The sample vessels are subjected to random checks for leachable anions and cations.



6.2743.047

Vial PP, 2.5 mL, 200 pieces

2.5 mL. 200 pieces. For IC Sample Processors.

The IC sample vessels are made of polypropylene (PP) plastic for health-care applications. Production and packaging both take place under sterile and clean room conditions (Clean Room Class 7, in accordance with DIN ISO 14644). This guarantees minimal degrees of contamination. The sample vessels are subjected to random checks for leachable anions and cations.



6.2743.050

Sample vessel 11 mL

2000 pieces. For IC Sample Processors and VA Autosamplers.

The IC sample vessels are made of polypropylene (PP) plastic for health-care applications. Production and packaging both take place under sterile and clean room conditions (Clean Room Class 7, in accordance with DIN ISO 14644). This guarantees minimal degrees of contamination. The sample vessels are subjected to random checks for leachable anions and cations.



6.2743.070

Stopper with perforation

2000 pieces. For IC Sample Processors

