



815 Robotic USB Sample Processor XL (1T/1P)

2.815.0010

Robotic USB Sample Processor XL with one workstation and one built-in membrane pump for the automatic processing of routine samples in series with large quantities and for complex sample preparation or parallel runs. In addition to the built-in pump, an additional one (membrane or peristaltic) and up to three dosing devices for Liquid Handling tasks can be connected.

Because of the multitude of application variants, rack, stirrer, titration head, robotic arm, Swing Head and sample vessels must be tailored to the application and ordered separately.

The control is "stand alone" using Touch Control. The following software products can be selected for the PC control: tiamo™ titration software, MagIC Net chromatography software, viva voltammetry software, or OMNIS.

Below, the accessories are grouped into Scope of delivery and Optional accessories.

Please keep this printout at hand for ordering replacement material.

These lists may be subject to change.

Scope of delivery 2.815.0010

Qt.	Order no.	Description
-----	-----------	-------------

Robotic USB Sample Processor XL with one workstation and one built-in membrane pump for the automatic processing of routine samples in series with large quantities and for complex sample preparation or parallel runs. In addition to the built-in pump, an additional one (membrane or peristaltic) and up to three dosing devices for Liquid Handling tasks can be connected.



Because of the multitude of application variants, rack, stirrer, titration head, robotic arm, Swing Head and sample vessels must be tailored to the application and ordered separately.

Sleeve with SGJ 14/12 mm and O-ring.



Used with Sample Changers



1 PCS

6.1621.000

Container 10 L

As rinsing or waste container in automated systems.



3 PCS

6.1805.060

FEP tubing / M6 / 60 cm

With light and kink protection



1 PCS

6.1805.110

FEP tubing / M6 / 80 cm

With light and kink protection



1 PCS

6.1812.000

PTFE tubing 4 mm / 6 mm / 4 m



1 PCS 6.1828.000 PVDF connection nipple

For 6.1621.000 canister.



1 PCS 6.2053.000 Cable clip

Cable clip for fastening cables and tubes



1 PCS 6.2151.000 Cable USB A – mini-DIN 8-pin

Controller cable



1 PCS 6.2621.030 Hexagon key 4 mm



1 PCS

6.2621.070

5 mm hex key for IC Sample Processors



1 PCS

6.2621.140

Hexagon key 2.5 mm



3 PCS

6.2709.070

Guiding sleeve

For fixation of buret and dosing tips in titration heads and electrode holders



3 PCS

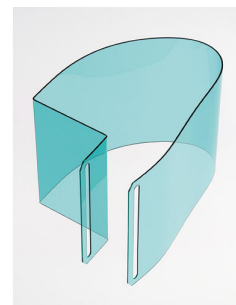
6.2740.020

Spray nozzle



For the fine-spraying of the rinsing solution.



Safety shield for Sample Processors with 786 Swing Head



Optional accessories

Order no.	Description	
2.772.0120	<p>772 Pump Unit – aspirate</p> <p>Peristaltic pump for direct connection to Sample Processors. The "Aspiration" version contains extensive accessories for the aspiration of titrated-out solutions.</p>	
2.786.0010	<p>786 Swing Head with transfer head left</p> <p>Additional equipment for Robotic Sample Processors XL for transferring / pipetting from small sample vessels into larger titration vessels on the rack or into an external titration cell; this can be located to the left of the work station.</p>	
2.786.0020	<p>786 Swing Head with transfer head right</p> <p>Additional equipment for Robotic Sample Processors XL for transferring / pipetting from small sample vessels into larger titration vessels on the rack or into an external titration cell; this can be located to the right of the work station.</p>	
2.786.0030	<p>786 Swing Head with titration swing arm, left- or right-swinging</p> <p>Additional equipment for Robotic Sample Processors XL for direct titration in sample vessels of 75 mL and more.</p>	

2.786.0040

786 Swing Head

Additional equipment for Robotic Sample Processors XL without titration or transfer heads.



2.801.0010

801 Stirrer

Magnetic stirrer without stand for supplementing the Titrino plus, Dosimat plus, Titrandos, Sample Processors, 805 Dosimats and 780/781 pH Meters. With permanently attached cable for MSB (Metrohm Serial Bus).



2.802.0020

802 Stirrer for sample changer

Rod stirrer for sample changer and Sample Processor.

With 104 mm 6.1909.020 stirring propeller and permanently installed cable.



2.802.0040

802 Stirrer for 804 Ti Stand

Rod stirrer including 6.1909.010 stirring propeller.



2.804.0040

804 Ti Stand with stand

Titration stand and controller for 802 Rod Stirrer. The 804 Ti Stand together with the optional 802 Rod Stirrer provides an alternative to the magnetic stirrer. Ti Stand with base plate, support rod and electrode holder.



2.823.0020

823 Membrane Pump Unit «aspire»

Membrane pump for direct connection to Sample Processors. The «Aspiration» version contains numerous accessories for aspirating off solutions.



2.849.0010

849 Level Control

Additional equipment for Sample Processors for monitoring the filling level of rinsing or waste canisters via Remote. Prevents pumps from running dry and/or canisters from overflowing and is suitable for use with aqueous solutions, solvents and suspensions.



6.06000.000

OMNIS Software storage device

License-based PC program for controlling complex OMNIS analysis systems.

- Sample-oriented operating procedures with numerous templates
- Graphical method editor with numerous templates
- Clearly organized and professional sample lists
- Management of instruments, work systems, sensors, solutions
- Dialog languages: German, English, Chinese

MNI
THE NEW LEVEL OF PERFORMANCE

Enables stand-alone operation of the OMNIS software on a Windows™ computer.

Features:

- The license already includes one OMNIS instrument license.
- Must be activated via the Metrohm licensing portal.
- Not transferable to another computer.



6.1458.010 Titration head, 6 x SGJ 14 and 3 x SGJ 9 openings.

With 6xSGJ 14 and 3x SGJ 9 openings.



6.1458.020 Titration head /4 x M10 connectors

With 4 M10 screw nipples, including stoppers.



6.1458.030 KF titration head /4 x M10 connectors

With 4 M10 screw nipples, including stoppers.



6.1458.040

Titration Head, 3 x SGJ 14

Titration head for 120 mL beakers. With 3 openings SGJ 14 and 4 openings 6.4 mm, 2 dosing tips included. Suitable for rinsing and aspiration equipment.



6.1458.070

Titration head / 2 x SGJ 14

Titration head for 75 mL beakers. With 2 openings SGJ 14, 2 openings 6.4 mm, and 3 pre-mounted dosing tips. Suitable for rinsing and aspiration equipment.



6.1462.030

Robotic arm with transfer head for 786 Swing Head, left swinging

Transfer robotic arm for liquid handling purposes



6.1462.040

Robotic arm with transfer head for 786 Swing Head, right swinging

Transfer robotic arm for liquid handling purposes



6.1462.050 Robotic arm with titration head for 786 Swing Head, left or right swinging
Titration head for Swing Head



6.1462.060 Robotic arm with holder for titration head, left swinging
Titration head holder to 786 Swing Head



6.1462.070 Robotic arm with holder for titration head, right swinging
Titration head holder to 786 Swing Head



6.1462.090 Robotic arm with Luer-Lock adapter for 786 Swing Head, right swinging
Transfer robotic arm for liquid handling



6.1462.150 Robotic arm with titration head and beaker sensor for 786 Swing Head,
left or right-swinging

Titration head with beaker sensor for 786 Swing Head, 2 x M10, 1 x SGJ
14.5, 2 x buret tip



6.1462.160 Robotic arm with holder for titration head and sensor for 786 Swing
Head, left swinging

Titration head holder with beaker sensor for 786 Swing Head



6.1462.170 Robotic arm with holder for titration head and sensor for 786 Swing
Head, right swinging

Titration head holder with beaker sensor for 786 Swing Head



6.1462.260 Robotic arm with holder for titration head, left swinging, external

Titration head holder for 786 Swing Head with possibility of swinging to
external positions



6.2001.070

Support stand for Sample Processors

Support stand for Sample Processors, for external titrations and dilutions (IC)



6.2041.350

Sample rack, 48 x 75 mL (PVC)

Sample rack for 815 Robotic USB Sample Processor XL, 855 Robotic Titrosampler "Basic", suitable for 48 sample beakers. The following sample beakers can be used: 6.1432.210, 6.1459.400.

Plastic: Polyvinyl chloride (PVC)



6.2041.400

Sample rack, 126 x 11 mL and 2 x 250 mL (PVC)

Sample rack for 815 Robotic USB Sample Processor XL, 855 Robotic Titrosampler "Basic" for 126 sample vessels and 2 sample beakers. The following sample vessels can be used: 6.02743.050, 6.2743.057, 6.1432.320, 6.1432.323, 6.1453.220, 6.1453.250.

Plastic: Polyvinyl chloride (PVC)



6.2041.410

Sample rack, 141 x 11 mL and 1 x 300 mL (PVC)

Sample rack for 815 Robotic USB Sample Processor XL, 855 Robotic Titrosampler "Basic" for 141 sample vessels and 1 rinsing bottle. The following sample vessels can be used: 6.2743.050, 6.2743.057, 6.1608.080.

Plastic: Polyvinyl chloride (PVC)



6.2041.430 Sample rack, 127 x 11 mL and 2 x 300 mL (PVC)

Sample rack for 815 Robotic USB Sample Processor XL, 855 Robotic Titrosampler "Basic" suitable for 127 sample vessels and 2 rinsing bottles. The following sample vessels can be used: 6.2743.050, 6.2743.057, 6.1608.080.

Plastic: Polyvinyl chloride (PVC)



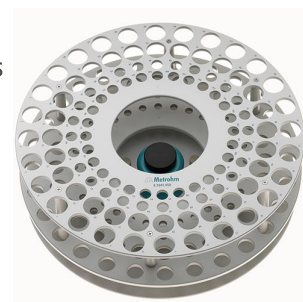
6.2041.440 Sample rack 148 x 11 mL + 3 x 300 mL

Sample rack for 148 x 11 mL samples with 3 rinsing beakers.



6.2041.450 Sample rack 56 x 11 mL + 56 x 50 mL

Multi-row sample rack for 56 samples in 11 mL sample vessels (6.2743.050) and 56 samples in sample vessels of 50 mL (6.2747.010).



6.2041.710 Sample rack, 160 x 6 mL, (PVC)

Sample rack for 815 Robotic Sample Processor, 855 Robotic Titrosampler "Basic" suitable for 160 sample vessels. The following sample vessels can be used: 6.2419.000.

Plastic: Polyvinyl chloride (PVC)



6.2041.780

Sample rack 65 x 11 mL + 25 x 50 mL

Multi-row sample rack for 65 samples in 11 mL sample vessels (6.2743.050) and 25 samples in 50 mL sample vessels (6.02743.030)



6.2041.800

Sample rack, 100 x 75 mL, (PVC)

Sample rack for 815 Robotic USB Sample Processor XL, 855 Robotic Titrosampler "Basic" suitable for 100 sample beakers. The following sample beakers can be used: 6.1432.210, 6.1459.400.

Plastic: Polyvinyl chloride (PVC)



6.2041.810

Sample rack, 34 x 150 mL, (PVC)

Sample rack for 815 Robotic USB Sample Processor XL, 855 Robotic Titrosampler "Basic" suitable for 34 sample beakers. The following sample beakers can be used: 150 mL beaker (tall).

Plastic: Polyvinyl chloride (PVC)



6.2041.820

Sample rack, 28 x 250 mL, (PVC)

Sample rack for 815 Robotic USB Sample Processor XL, 855 Robotic Titrosampler "Basic" suitable for 28 sample beakers. The following sample beakers can be used: 6.14332.320, 6.1432.323, 6.1453.220, 6.1453.250.

Plastic: Polyvinyl chloride (PVC)



6.2041.830 Sample rack, 28 x 200 mL, (PVC)

Sample rack for 815 Robotic USB Sample Processor XL, 855 Robotic Titrosampler "Basic", suitable for 28 sample beakers. The following sample beaker can be used: 6.1459.310.

Plastic: Polyvinyl chloride (PVC)



6.2041.840 Sample rack, 59 x 120 mL, (PVC)

Sample rack for 815 Robotic USB Sample Processor XL, 855 Robotic Titrosampler "Basic", suitable for 59 sample beakers. The following sample beakers can be used: 6.1459.300, 6.1459.307.

Plastic: Polyvinyl chloride (PVC)



6.2041.850 Sample rack, 59 x 120 mL, (PP)

Sample rack for 815 Robotic USB Sample Processor XL, 855 Robotic Titrosampler "Basic", suitable for 59 sample beakers. The following sample beakers can be used: 6.1459.300, 6.1459.307.

Plastic: Polyvinyl chloride (PVC)



6.2041.900 Sample rack insert, 54 x 75 mL, for water bath, (Al)

Sample rack insert for 815 Robotic USB Sample Processor XL, 855 Robotic Titrosampler "Basic", suitable for 54 sample beakers. The following sample beakers can be used: 6.1432.210, 6.1459.400.

Material: Aluminum (Al)



6.2058.020 Head extension 30 mm for Sample Processors
Head extension 30 mm for 789, 815 Sample Processors.



6.2058.030 Head extension 10 mm for Sample Processors
Head extension for use with the waterbath rack.



6.2058.110 Tower extension for Sample Processors
Height extension 130 mm for Sample Processors. Tower extension for COD applications.



6.2141.300 Remote cable 843 Pump Station to Sample Processor
Remote cable for the direct connection of the 843 Pump Station to the pump connectors of the Sample Processors



6.2148.010

Remote Box MSB

Additional remote interface for the connection of devices that can be controlled via remote lines. With permanently attached cable.



6.2711.070

Drip pan for 789/815/855

Drip pan for 789, 815, 855 Robotic Sample Processors XL



6.2840.000

Water bath for Robotic Sample Processors and Robotic Titrosampler

Water bath rack for Robotic Sample Processors and Titrosampler.



6.2841.000

External Polytron rinsing station for Robotic Sample Processors

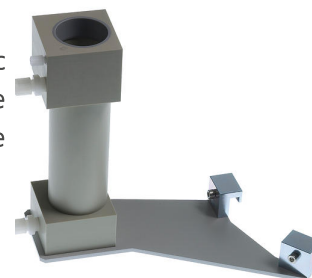
The external rinsing station can be fitted on the side next to the Robotic Sample Processor tower, making it possible for external cleaning of the Polytron to be carried out during additional actions on the sample rack.



6.2841.010

External rinsing station for robotic arm with 6.1458.040 titration head

The external rinsing station can be fitted on the side next to the Robotic Sample Processor tower, making it possible for external cleaning of the titration equipment to be carried out during additional actions on the sample rack.



6.5619.000

Transfer equipment, 0.5 - 2 mL, for 789/815

Complete equipment for the transfer of solutions from 0.5 to 2.0 mL on the Robotic Sample Processor.

