



Application Note AN-S-399

Dosage de la Cl pour le fluorure dans une solution topique de fluorure de sodium et de phosphate acidulé

Étude d'équivalence des colonnes selon la pharmacopée américaine

Sodium fluoride and acidulated phosphate topical solution products are used for dental hygiene to prevent cavities on teeth. Fluoride is a mineral that helps to strengthen the enamel on teeth, making them more resistant against decay by acids and bacteria.

Pharmaceuticals such as these anticavity products require strict quality control. Therefore, it is necessary to determine any impurities in such products as well

as the appropriate contents of the active substances. This Application Note outlines the **fluoride IC assay** as described in the USP Monograph Sodium Fluoride and Acidulated Phosphate Topical Solution [1] using the Metrosep A Supp 1 column and suppressed conductivity detection. The column equivalency study was carried out in cooperation with the U.S. Pharmacopoeia.

SAMPLES AND STANDARDS

A dentalcare product (topical solution) with a nominal concentration of 1.23% sodium fluoride was investigated for its fluoride content. The samples were diluted in ultrapure water in two steps to obtain a nominal concentration of 0.5 µg/mL fluoride.

The system suitability solution contained 1.1 µg/mL sodium fluoride and 0.5 µg/mL of sodium chloride in ultrapure water, as described in the respective USP

monograph [1]. The solution was prepared by volumetric dilution of 1000 mg/L standard solutions of fluoride and chloride using micropipettes and 100 mL volumetric flasks.

The quantification of the results was performed based on a single point calibration with a 1.1 µg/mL fluoride standard.

EXPERIMENTAL

The samples were injected directly into the ion chromatograph (Figure 1) without further sample preparation and analyzed using the method parameters given in the USP monograph (Table 1). Anionic components were separated isocratically on a Metrosep A Supp 1 - 250/4.0 column containing the alternative packing material L46. The conductivity signal was detected after sequential suppression.



Figure 1. Instrumental setup including a 930 Compact IC Flex with IC Conductivity Detector and a 919 IC Autosampler plus.

Table 1. IC method parameters as per USP monograph «Sodium Fluoride and Acidulated Phosphate Topical Solution» [1].

Column with L46 packing	Metrosep A Supp 1 - 250/4.6
Eluent	150 mg/L of anhydrous sodium carbonate and 1.0 mL/L of 1 N sodium hydroxide
Flow rate	1.0 mL/min
Column temp.	30 °C
Injection vol.	20 µL
Detection	Conductivity with sequential suppression

RESULTS

Fluoride and chloride were analyzed in diluted topical solutions according to the USP General Chapter Chromatography [2]. A column equivalency study was performed, and all acceptance criteria (e.g., repeatability, resolution, tailing factor, and accuracy) were fulfilled according to the USP General Chapter Validation of Compendial Procedures [3]. Resolution between the fluoride and chloride peaks was exceptional (11.6) using the Metrosep A Supp 1 - 250/4.6 column (packing material L46).

Fluoride eluted as a symmetric peak (tailing factor 1.2) with high repeatability. The relative standard deviation for the fluoride peak area in the system suitability solution was calculated at 1.2% (Table 2, Figure 2).

Figure 3 shows that the fluoride content was accurately reflected in the declared label for the analyzed samples (99.8% recovery).

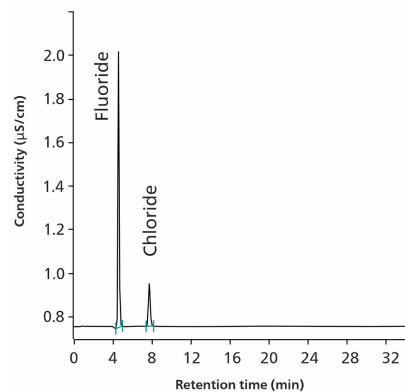


Figure 2. Chromatogram of the system suitability solution containing 1.1 µg/mL sodium fluoride and 0.5 µg/mL sodium chloride.

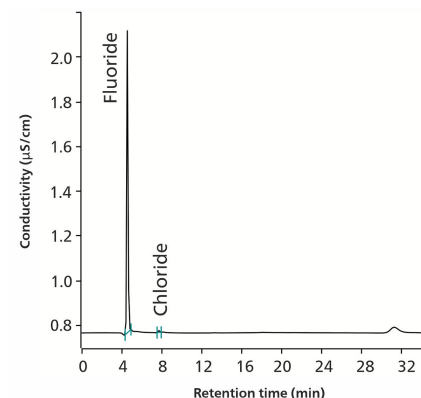


Figure 3. Chromatogram of a topical solution containing 1.065 µg/mL fluoride (99.8% recovery) and traces of chloride (not quantified).

Table 2. Selected performance characteristics from the system suitability study.

Performance characteristics	Acceptance criteria	Results
Resolution	>1.5 between fluoride and chloride peaks	11.6
Tailing factor	Tailing factor (asymmetry) for the fluoride ion peak is <2.0	1.2
Repeatability	Relative standard deviation for the fluoride ion peak area in the standard solution is <2.0% for five replicates	1.2 %

CONCLUSION

The presented IC method for **Fluoride in Sodium Fluoride and Acidulated Phosphate Topical Solution** with the **Metrosep A Supp 1 column** (packing material L46) is officially included into the USP [1]. Robustness

and reliability of the method was demonstrated within the column equivalency study following the USP General Chapters for Chromatography and Validation of Compendial Procedures [2–3].

REFERENCES

[1] U.S. Pharmacopeia. USP-NF Sodium Fluoride and Acidulated Phosphate Topical Solution. Monograph. https://doi.usp.org/USPNF/USPNF_M76520_06_01.html.
[2] 621 Chromatography.

[DOI:10.31003/USPNF_M99380_01_01](https://doi.org/10.31003/USPNF_M99380_01_01)
[3] 1225 Validation of Compendial Procedures; General Chapter; U.S. Pharmacopeia/National Formulary: Rockville, MD.
[DOI:10.31003/USPNF_M99945_04_01](https://doi.org/10.31003/USPNF_M99945_04_01)

Internal references: AW IC AE6-0121-092021; AW IC

AE6-0122-092020

CONTACT

Metrohm France
13, avenue du Québec - CS
90038
91978 VILLEBON
COURTABOEUF CEDEX

info@metrohm.fr

CONFIGURATION



930 Compact IC Flex

Le 930 Compact IC Flex est un appareil CI compact intelligent **sans suppression**. L'appareil peut être utilisé avec n'importe quelles méthodes de séparation et de détection.

Domaines d'application typiques :

- Déterminations d'anions ou de cations sans suppression avec détection de conductivité
- Applications simples avec UV/VIS ou détection ampérométrique



Metrosep A Supp 1 - 250/4,6

La colonne pour anions Metrosep A Supp 1 - 250/4,6 est d'utilisation universelle, caractérisée par sa capacité moyenne et sa sélectivité spéciale. Avec cette colonne, il est possible de traiter des échantillons présentant des concentrations très différentes. Par exemple, il est même possible de déterminer 4 µg/L de sulfate dans une solution de 150 g/L de chlorure de sodium. Une particularité supplémentaire est que les ions bromure éluent après les ions nitrate. La colonne A Supp 1 - 250/4.6 impressionne par ses excellentes qualités de séparation, notamment dans les analyses d'oxohalogénures. Les variations de pression, des changements constants d'éluants et un débit élevé d'échantillons n'ont aucune influence sur la performance de séparation de cette colonne, même après une très longue période d'utilisation. C'est une « bête de travail » pour le laboratoire de développement ou de routine.