



Metrosep A Supp 21

Determine oxyhalides in complex sample matrices with ease

HIGHLIGHTS

- Inorganic anions and oxyhalides in one run
- Excellent separation capabilities
- Optimized selectivity for hydroxide eluents
- Extreme capacity for highest compatibility with complex sample matrices
- Strong thermal, mechanical, and chemical stability
- Universal applicability

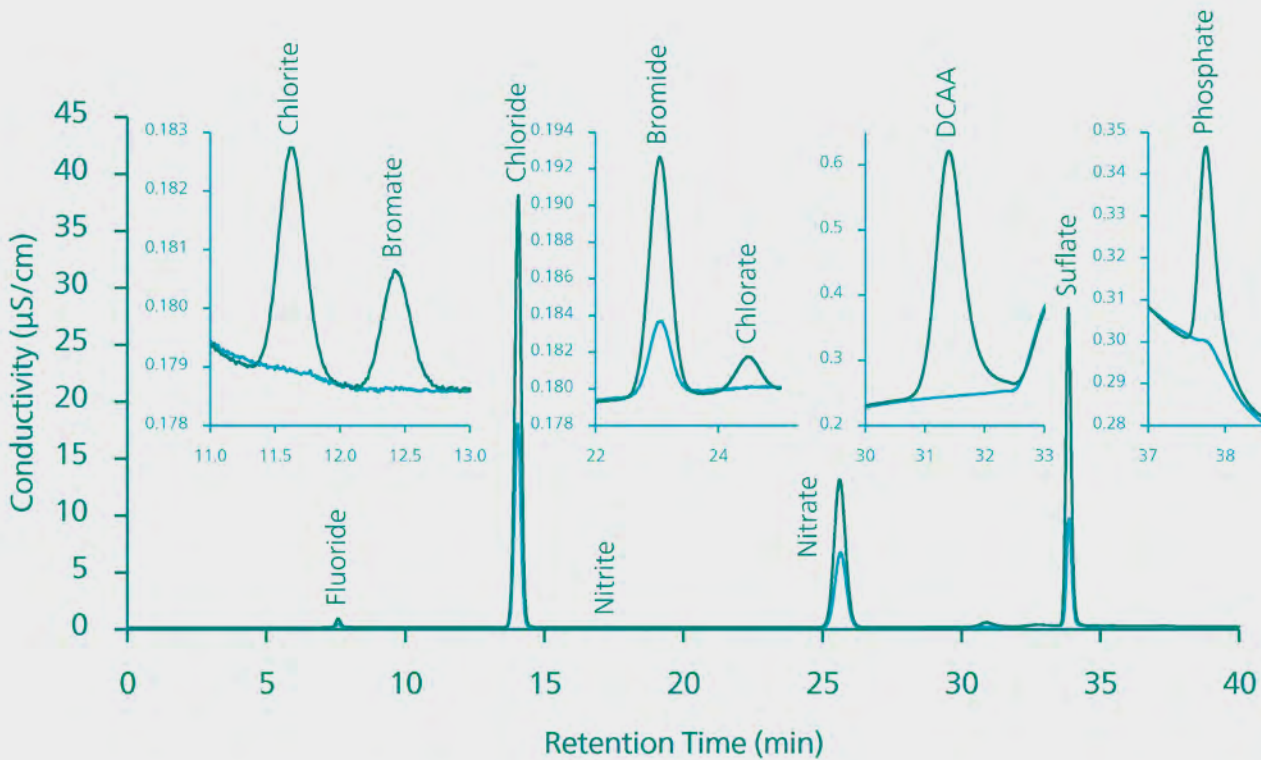
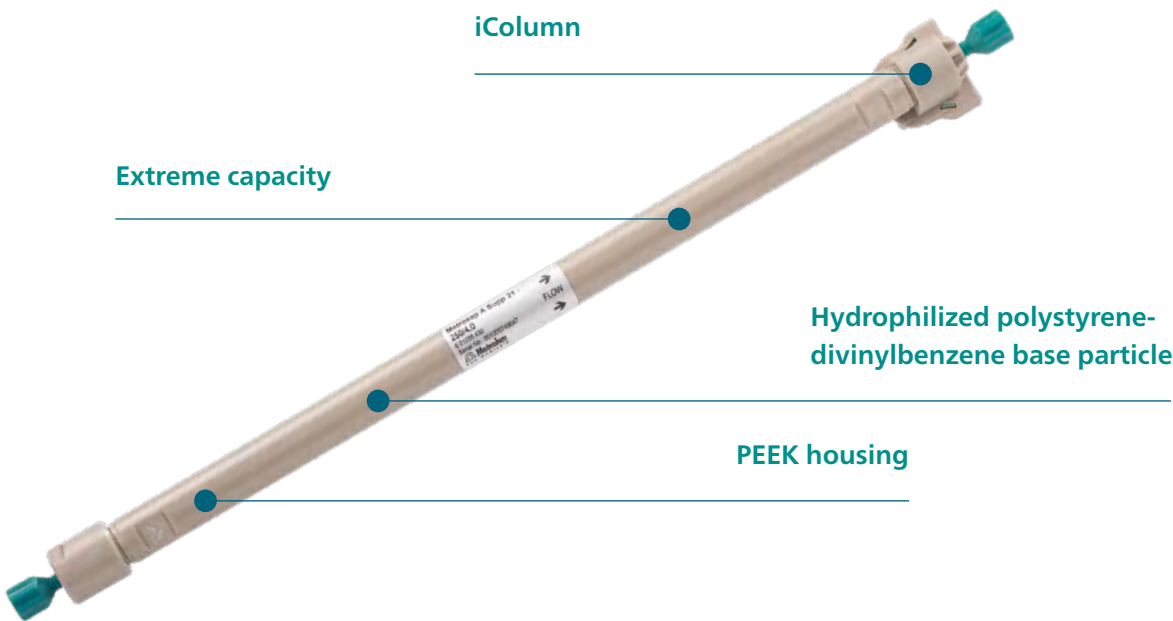


Metrosep A Supp 21 – determination of inorganic anions and oxyhalides using hydroxide based eluents

The Metrosep A Supp 21 column is a high performance anion exchange chromatography column with a selectivity specifically engineered for hydroxide eluents. With its unique selectivity, it can tackle the determination of disinfection byproducts such as oxyhalides in the most challenging sample matrices. The column material consists of a hydrophilized polystyrene divinylbenzene copolymer with quaternary ammonium groups, which provides for exceptional peak shapes.

THE FIELD OF APPLICATION OF THE METROSEP A SUPP 21 IS EXTREMELY WIDE. SELECTED EXAMPLES ARE:

- Determination of standard anions (fluoride, chloride, nitrite, bromide, nitrate, phosphate, and sulfate) in any water sample, exceeding the performance requirements of US EPA 300.1 A and DIN ISO 10304-1;
- Determination of standard anions and organic acids in complex sample matrices, such as environmental or food samples;
- Determination of standard anions (fluoride, chloride, nitrite, bromide, nitrate, phosphate, and sulfate), oxyhalides (chlorite, bromate and chlorate) and dichloroacetate in any water sample, exceeding the performance requirements of US EPA 300.1 A and B and DIN ISO 10304-1 & 4.



Easy determination of inorganic anions and oxyhalides in a tap water sample with and without spiking (10 mg/L chloride, nitrate and sulfate, 1 mg/L dichloroacetate (DCAA), 100 µg/L fluoride, phosphate, 20 µg/L nitrite, bromide, 5 µg/L chlorite, bromate, chlorate) according to EPA 300.1 Part A and B.



EXCEPTIONAL SEPARATION CAPABILITY

- Sharp and symmetric peaks
- High resolution between peaks



STABLE PACKING AND LONG LIFETIME

- Monodisperse, 4.6 µm particles
- Dense packing of stable particles



UNIVERSAL APPLICABILITY



- Excellent separation efficiency
- Manyfold options to modify the selectivity



HIGH ROBUSTNESS AGAINST COMPLEX MATRICES

- Extreme capacity minimizes sample matrix effects
- Full compatibility with organic modifiers and extreme pH

ORDERING INFORMATION

6.01036.420	Metrosep A Supp 21 - 150/4.0	
6.01036.430	Metrosep A Supp 21 - 250/4.0	
6.01036.500	Metrosep A Supp 21 Guard/4.0	