

IC Application Note No. U-15

Title: Chromium(VI) in a leather extract

Summary: Determination of chromium(VI) (chromate) in leather extract using anion chromatography with UV/VIS detection after post column reaction (PCR) and inline dialysis as sample preparation.

Sample: Aqueous leather extracts

Sample Preparation: Dilution 1 : 10 prior to inline sample dialysis

Column: 6.1006.520 Metrosep A Supp 5 – 150

Wavelength: 540 nm

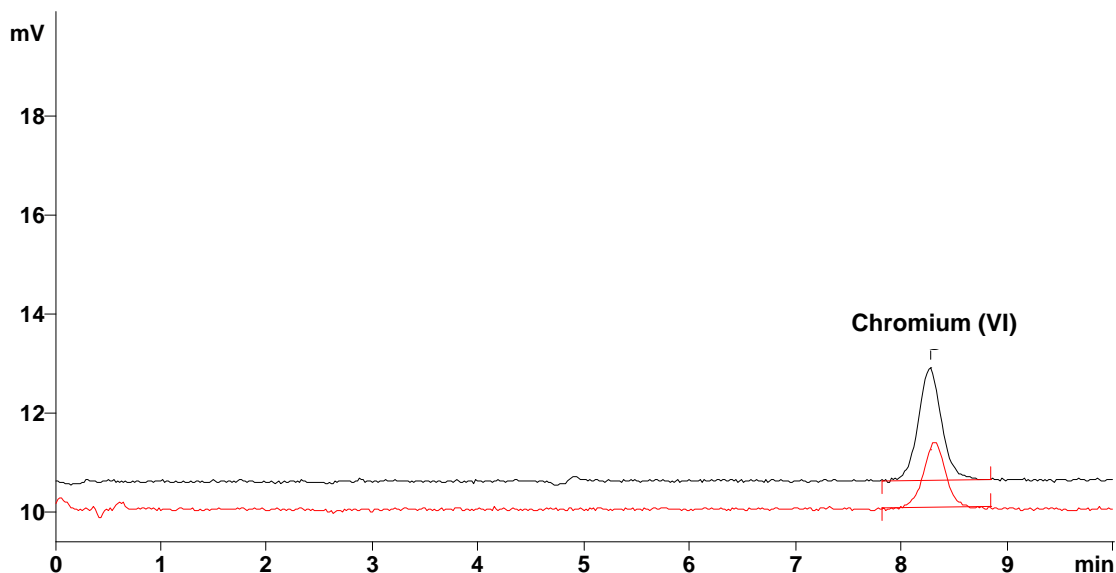
Eluent: 4.0 mmol/L sodium hydrogencarbonate,
0.5 mmol/L sodium carbonate

Flow: 0.7 mL/min

PCR reagent: 0.5 g/L diphenylcarbazide, 10 % methanol,
0.5 mol/L sulfuric acid

PCR Flow: 0.5 mL/min

Injection Volume: 50 µL



Results:	Chromium (VI) µg/L	Chromium (VI) mg/kg
Sample		4.26
Standard	10.0	

Comments: The standard solution contained 10 mg/L phosphate to adjust for the ionic strength of the sample solution.