

IC Application Note No. S-237

Title: Phosphor species in process water

Summary: Determination of hypophosphite, phosphite and phosphate besides fluoride, chloride and sulfate in process water using anion chromatography with suppressed conductivity detection.

Sample: Process water

Sample preparation: Dilution 1 : 10 in eluent

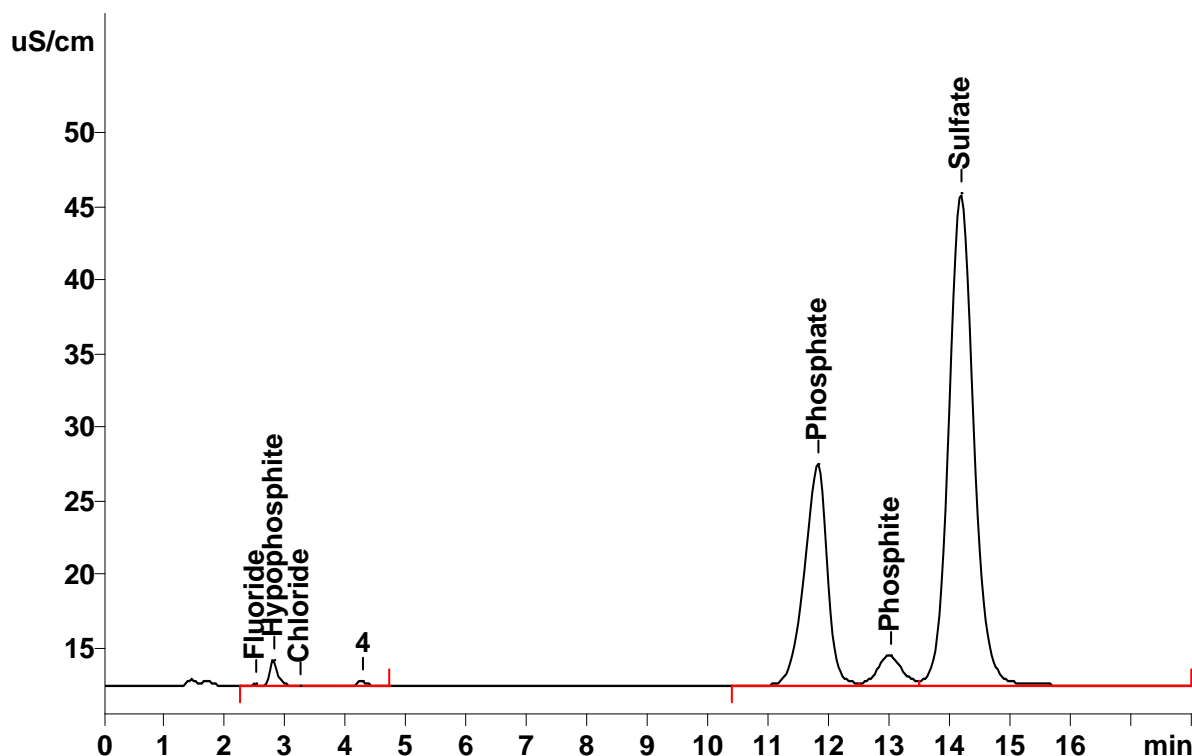
Column: 6.1006.100 Dual 2

Eluent: 1.3 mmol/L sodium carbonate
2.0 mmol/L sodium hydrogen carbonate

Suppressor: Metrohm Suppressor Module (MSM, 50 mmol/L H₂SO₄)

Flow: 0.8 mL/min

Injection Volume: 1.5 µL



Results:	Fluoride	Hypophosphite g/L	Chloride	Phosphate g/L	Phosphite g/L	Sulfate
	n.q.	0.311	n.q.	1.396	10.24	n.q.